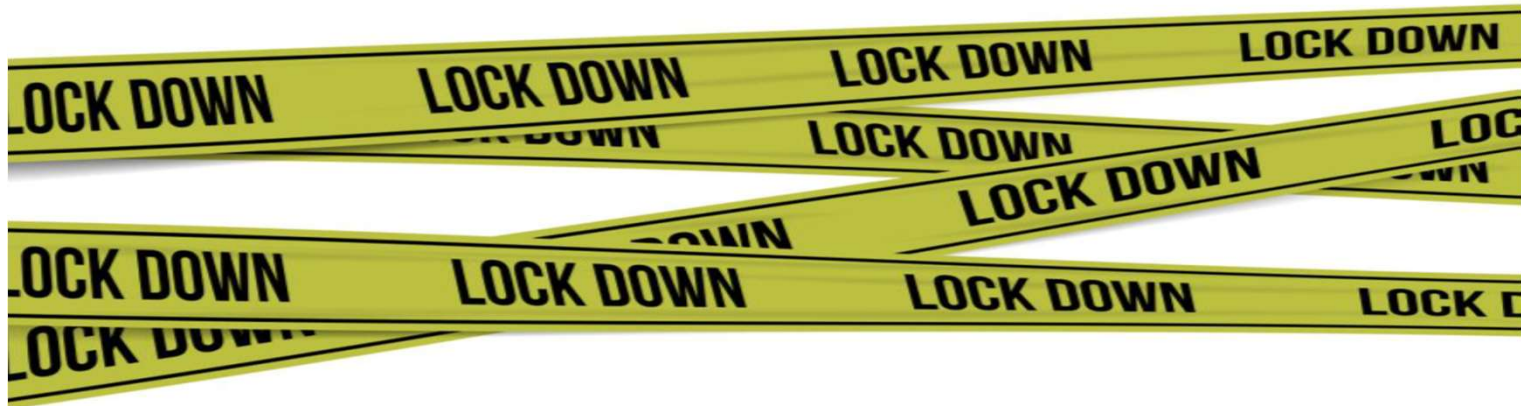


Changes in the prevalence of cannabis use during the COVID-19 pandemic in Denmark

Ola Ekholm



The Danish Health and Morbidity Surveys

- The National Institute of Public Health has carried out national representative health surveys since 1987
- The purpose of the surveys is to describe the status and trends in health and morbidity in the adult population (16 years or older) and in the factors that influence health status
- The surveys have been carried out in 1987, 1994, 2000, 2005, 2010, 2013, 2017 and 2021 (questions on use of illicit drugs since 2000)
- All samples were drawn at random from the adult Danish population using the Danish Civil Registration System

Data collection

	2000	2005	2010	2013	2017	2021
Sampling method	County-stratified random sample	County-stratified random sample	SRS	SRS	SRS	SRS
Data collection mode (illicit drugs)	Self-administered Paper-based	Self-administered Paper-based	Self-administered Paper- and Web-based	Self-administered Paper- and Web-based	Self-administered Paper- and Web-based*	Self-administered Paper- and Web-based*
Sample size	22,484	21,832	25,000	25,000	25,000	25,000
Response proportion (%)	63.5	51.5	60.1	57.1	56.1	45.4

*Since 2017 the introduction letters were mainly distributed digitally by the secure electronic mail service, Digital Post (<10% has deregistered from this service)

Weighting

Calibrated weights were applied in order to reduce the impact of non-response.

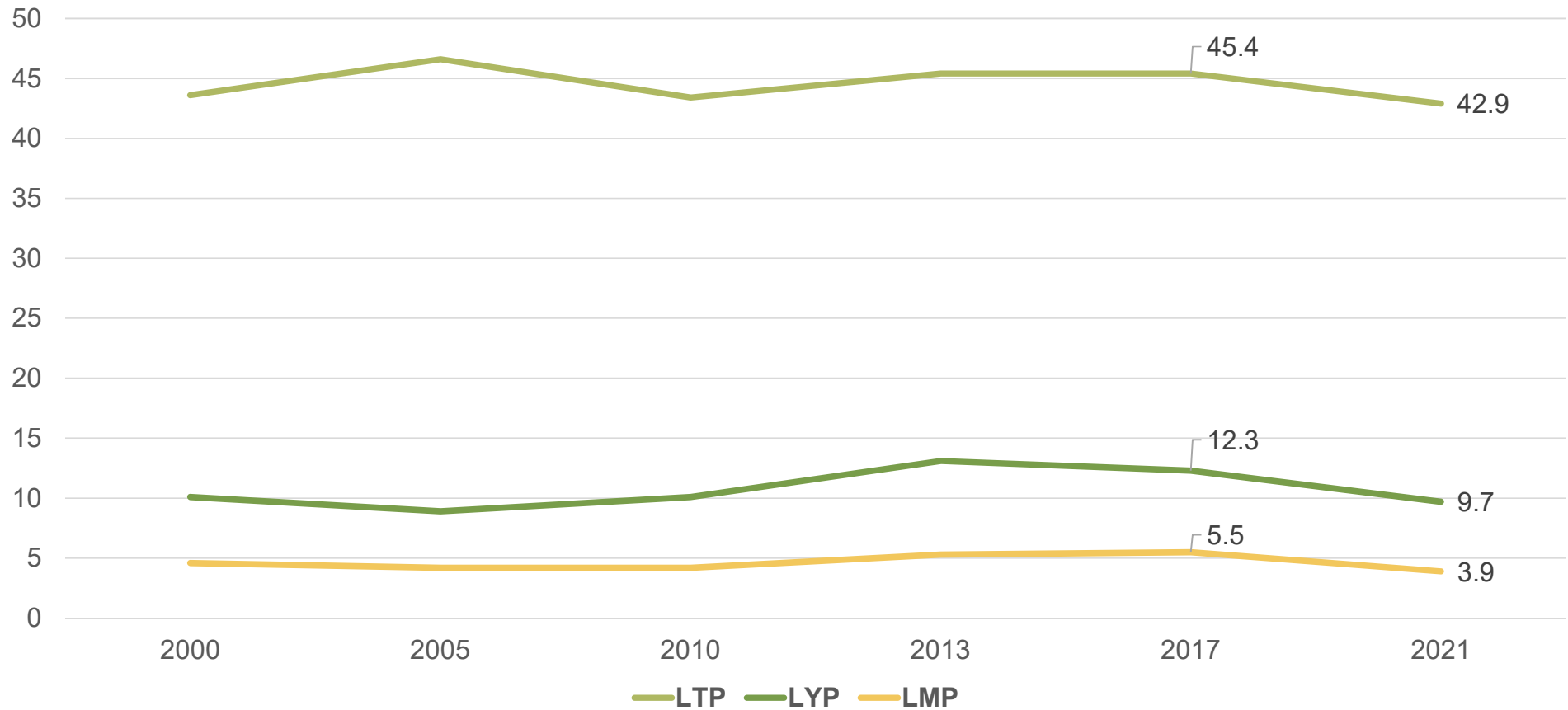
As all individuals with a permanent residence in Denmark have a unique personal identification number, it was possible to link on an individual level the personal identification numbers of both respondents and non-respondents to relevant administrative registers.

Weights were computed by Statistics Denmark and based on information on e.g. sex, age, municipality of residence, highest completed level of education, income, marital status, ethnic background, number of visits to the general practitioner and occupational status.

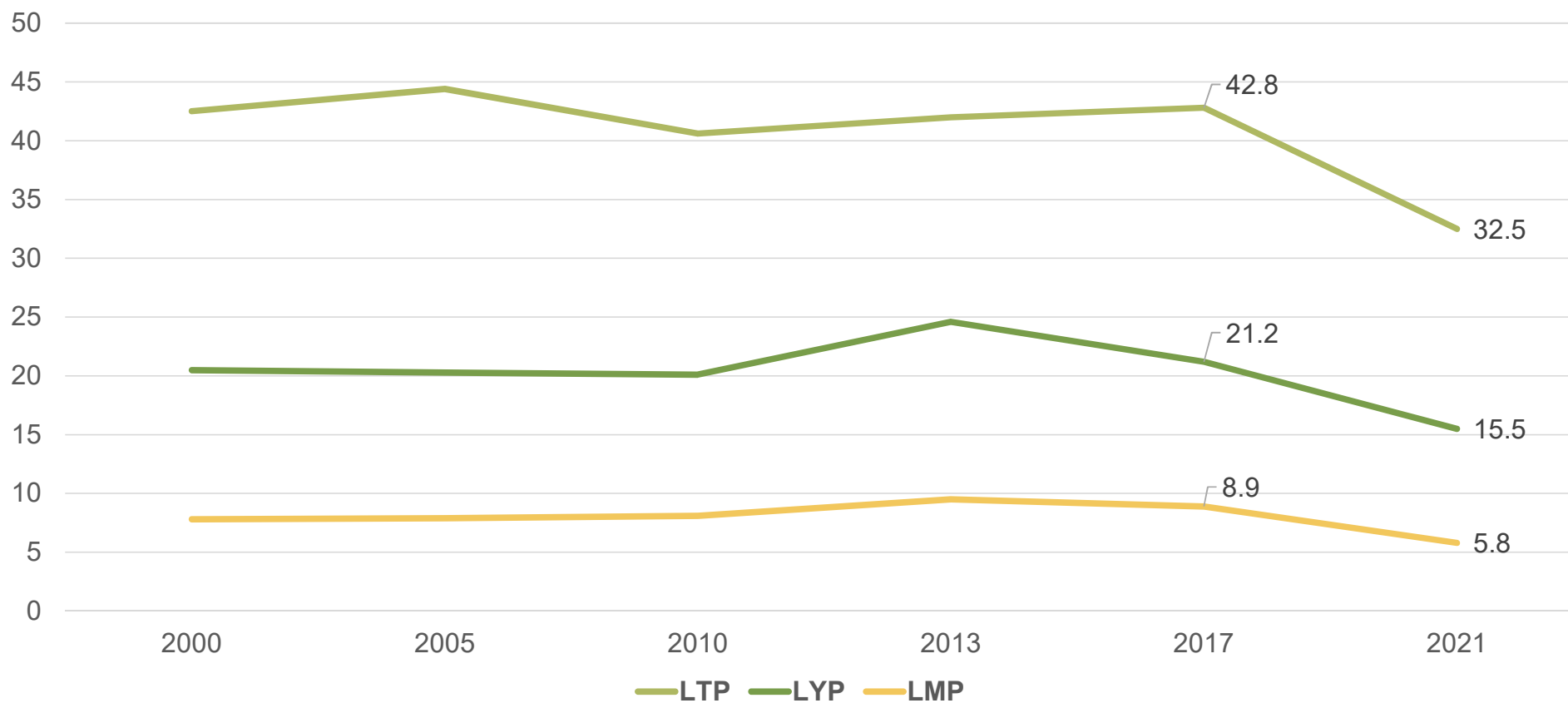
Data collection in 2021

- Data collected between February 5th and May 12th
- Denmark had the first lockdown in March-June in 2020
- In September 2020 a second wave hit Denmark and a second lockdown began in December
 - Examples of restrictions during the data collection:
 - Nightlife closed
 - Restaurants and bars closed
 - Schools and universities were closed
 - Non-essential shops were forced to close
 - Limits on public gathering
 - Gradual reopening of Denmark from March 2021

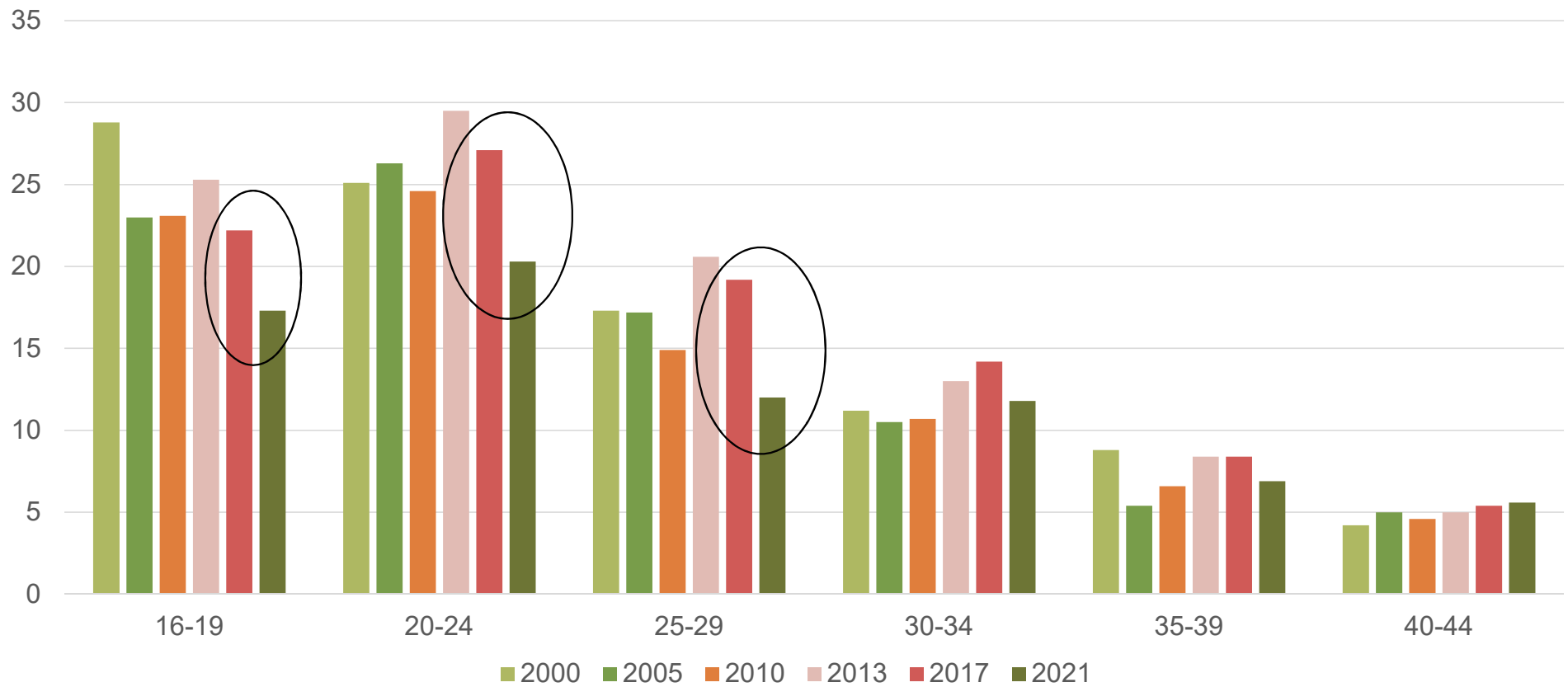
Prevalence of cannabis use among 16-44-year-olds



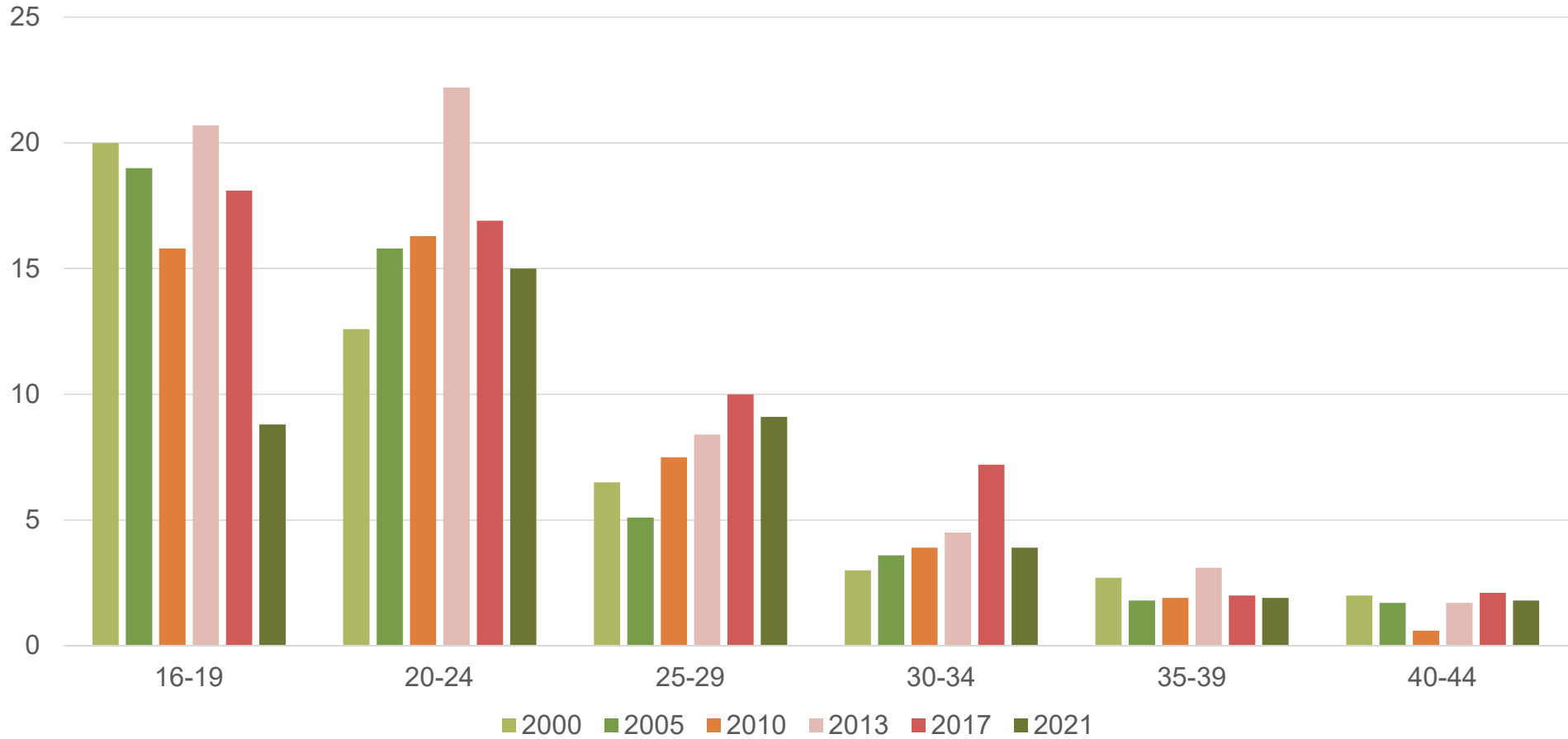
Prevalence of cannabis use among 16-24-year-olds



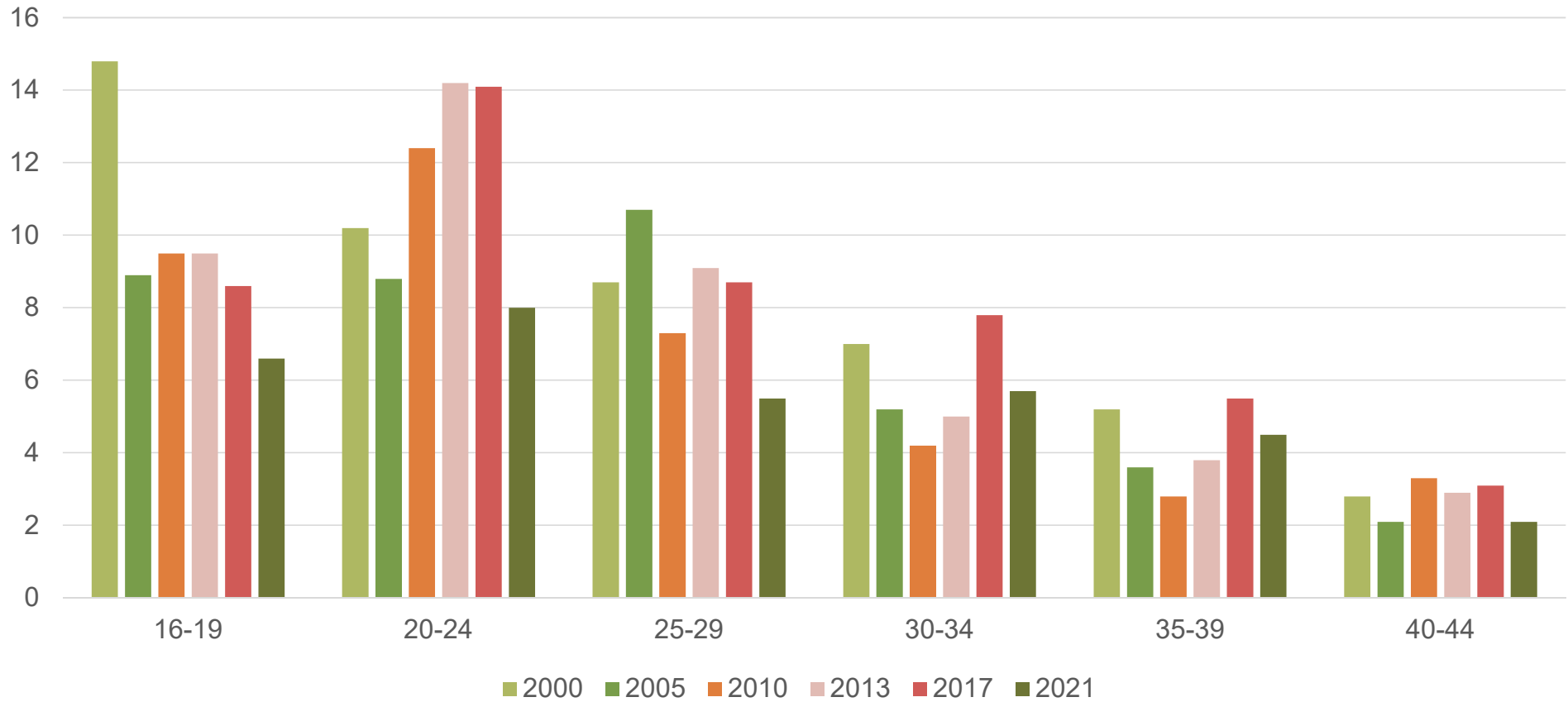
Last year prevalence of cannabis use by age (MEN)



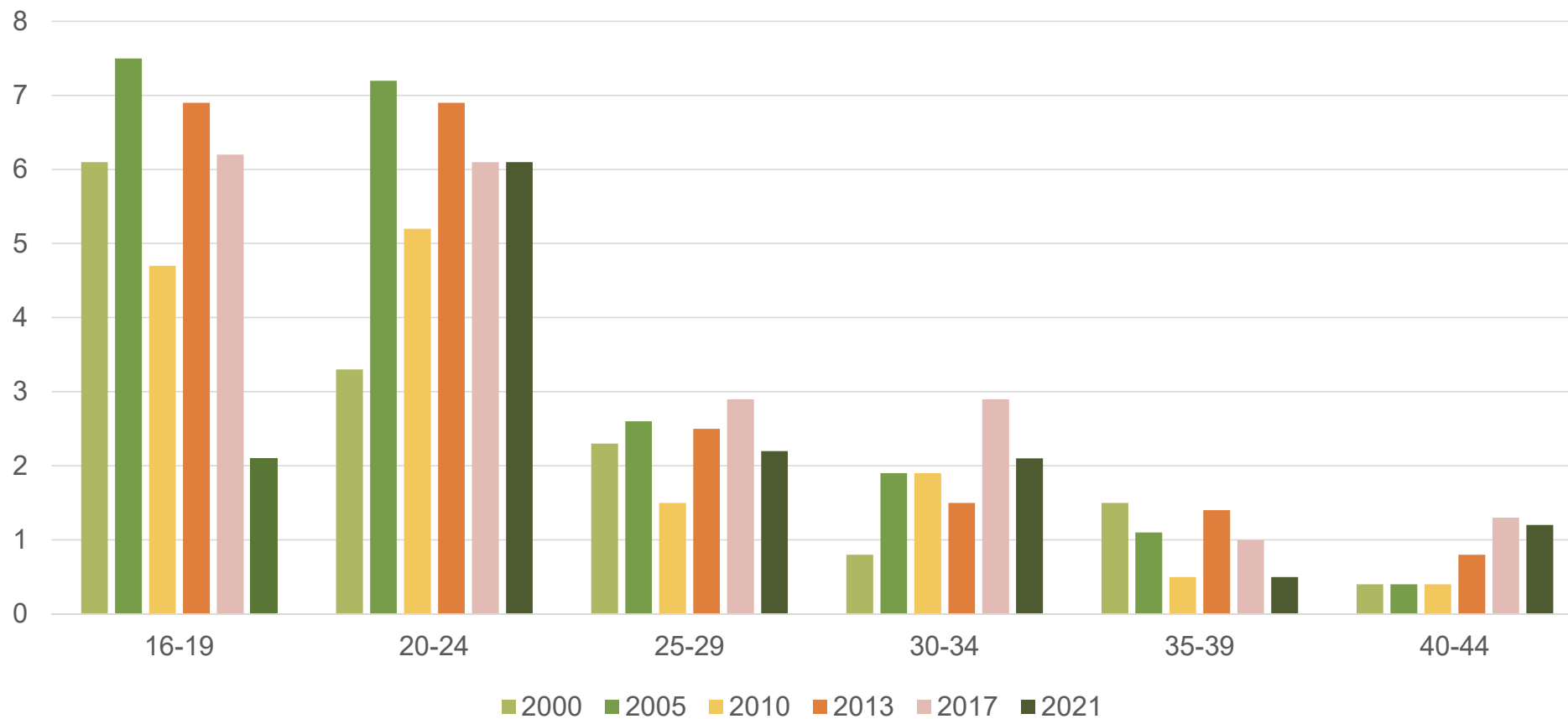
Last year prevalence of cannabis use by age (WOMEN)



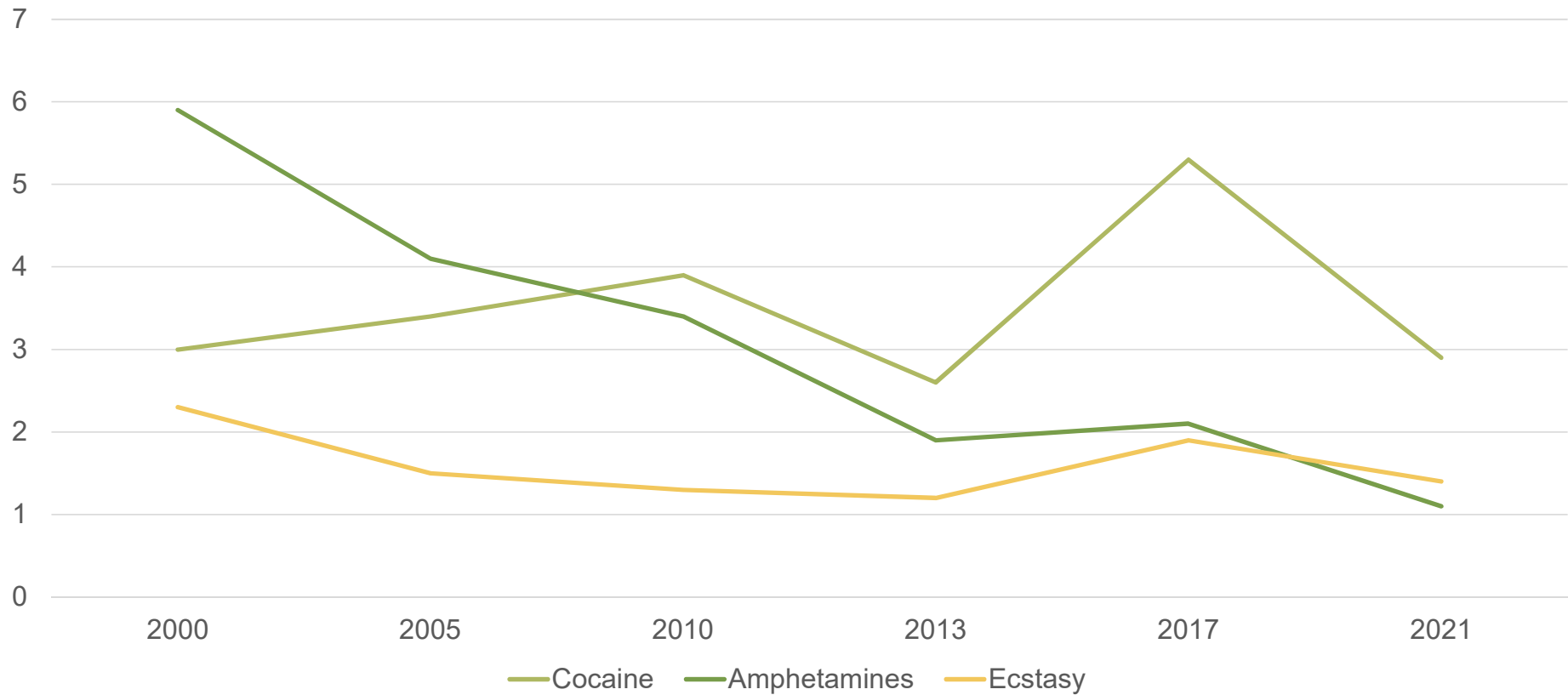
Last month prevalence of cannabis use by age (MEN)



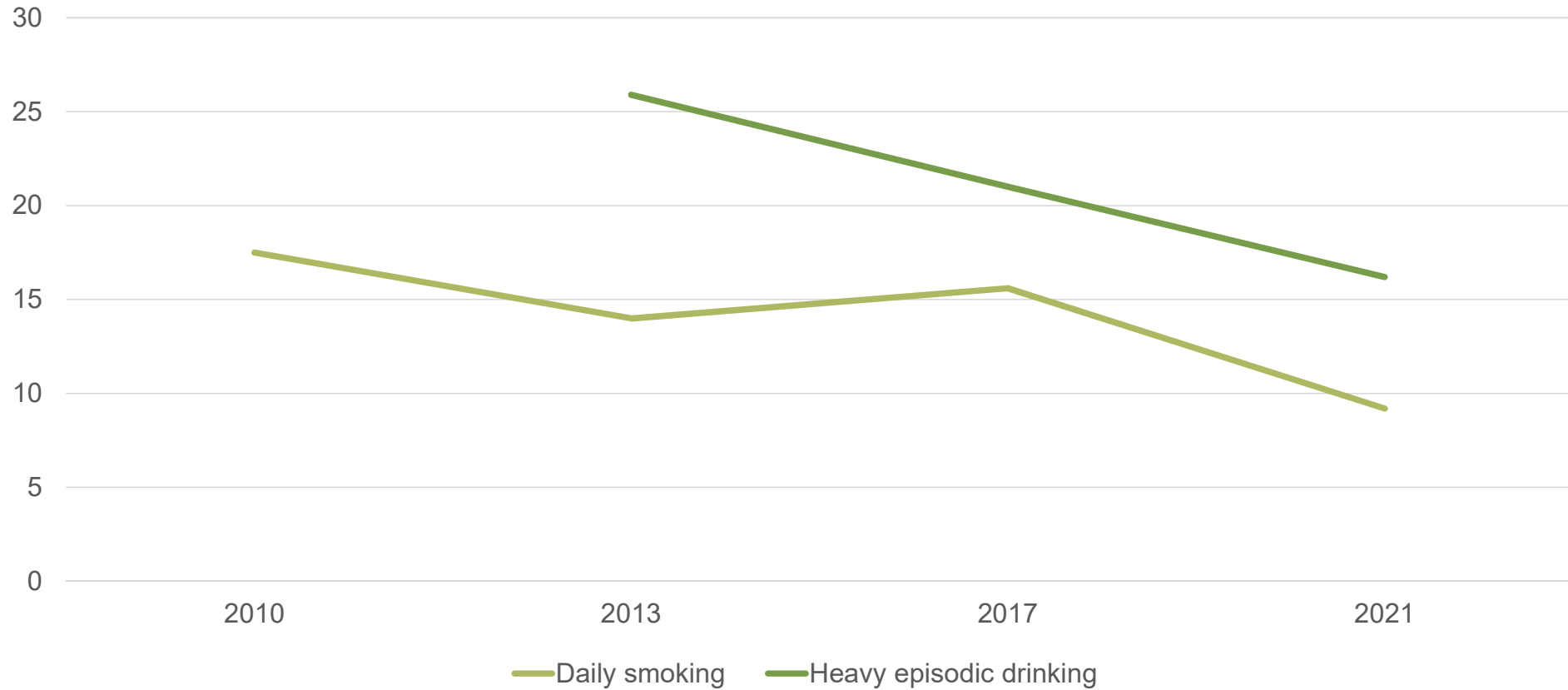
Last month prevalence of cannabis use by age (WOMEN)



Last year prevalence of other illicit drugs among 16-24-year-olds



Prevalence estimates for daily smoking and heavy episodic drinking at least once a week among 16-24-year-olds*



*Danish National Health Survey

Conclusion

- The COVID-19 pandemic lockdown affected the use of cannabis among young adults in Denmark
- Last year and last month cannabis use prevalence decreased among young men (16-29 y.) and young women (16-19 y.) in 2021
 - Rather stable prevalence in the other age groups
 - What happens after the pandemic??

THANK YOU FOR YOUR ATTENTION!

oek@sdu.dk