

Analysis of residues from used injecting drug paraphernalia in Hungary, 2015-16

Anna Péterfi

Hungarian NFP, Ministry of Human Capacities

PDU Expert Meeting

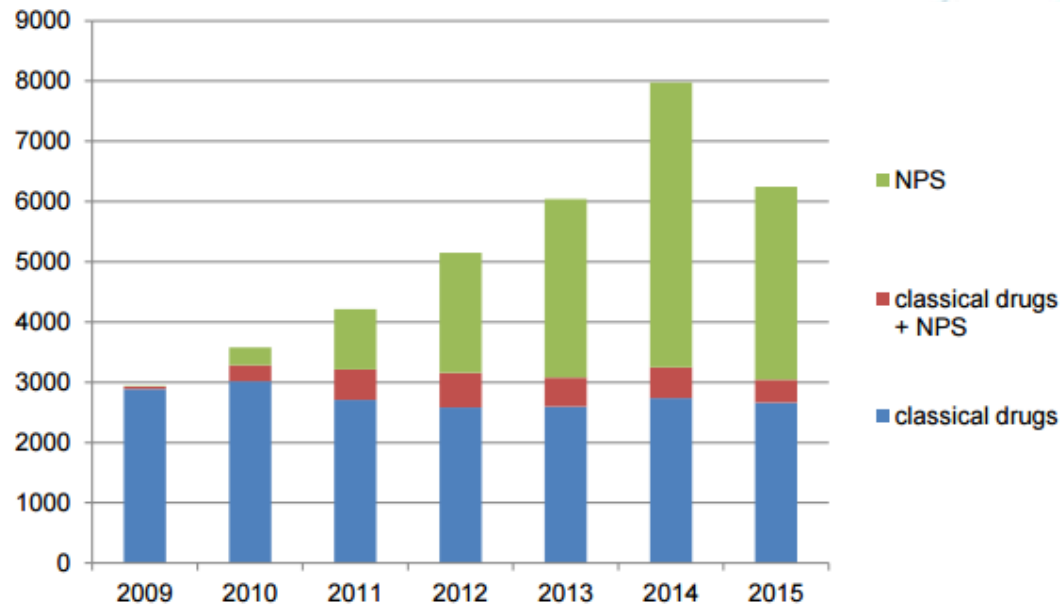
8 June 2017



Drog, Adat, Döntés

Context – NPS in Hungary (1)

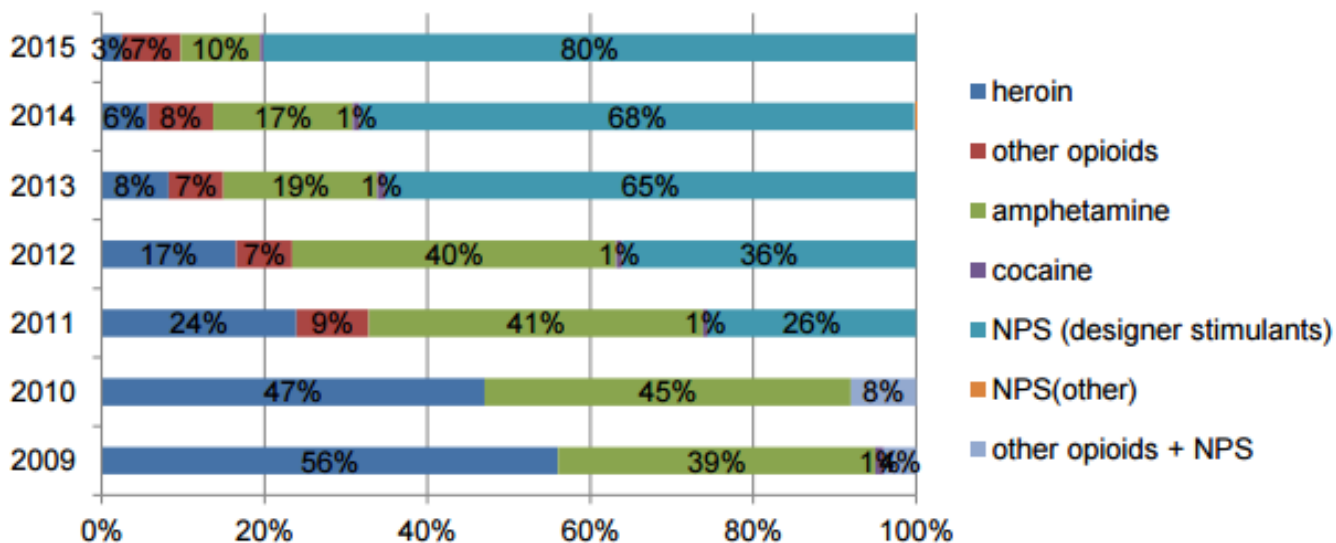
- Spread of NPS in Hungary since 2009
- Relatively low life time prevalence in GPS
- Heroin shortage since 2009
- Increasing number of NPS seizures



Context – NPS in Hungary (2)

- NPS dominates in PWID according to needle and syringe programmes' and HIV/HBV/HCV seroprevalence survey data

Breakdown of needle and syringe programmes' clients by primarily injected drug 2009-2015

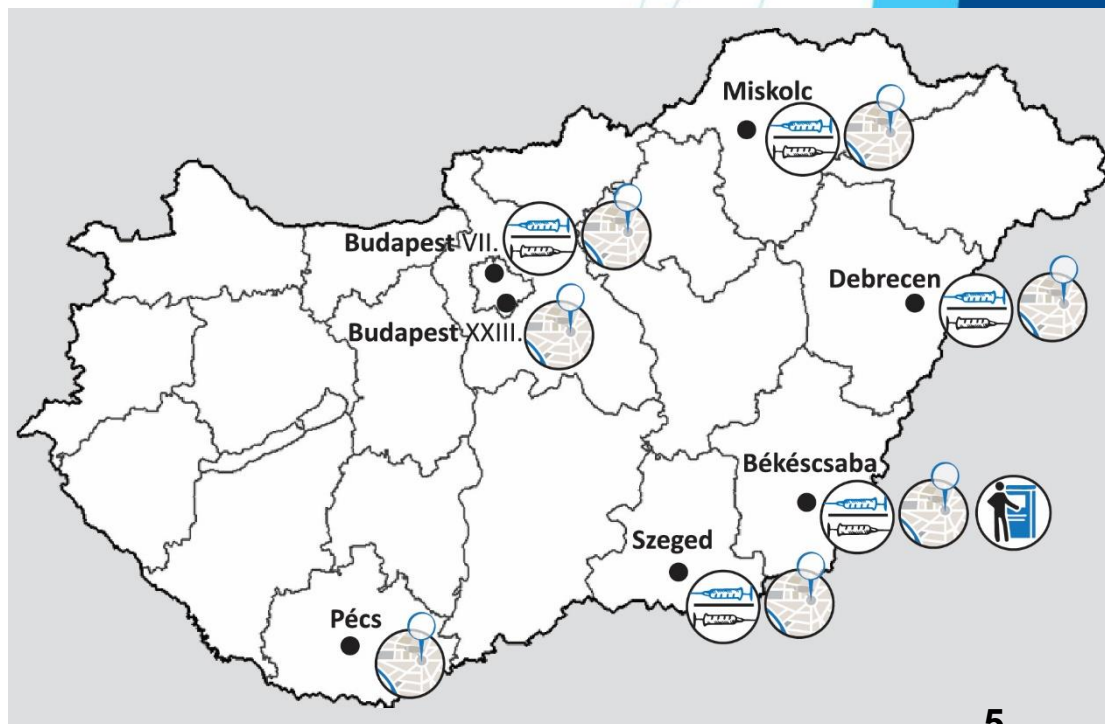


Organisational background

- „Breaking the Drug Cycle”
- project of the Hungarian Interchurch Aid
- Funded by EU (JUST/2013/ISEC/DRUGS/AG)

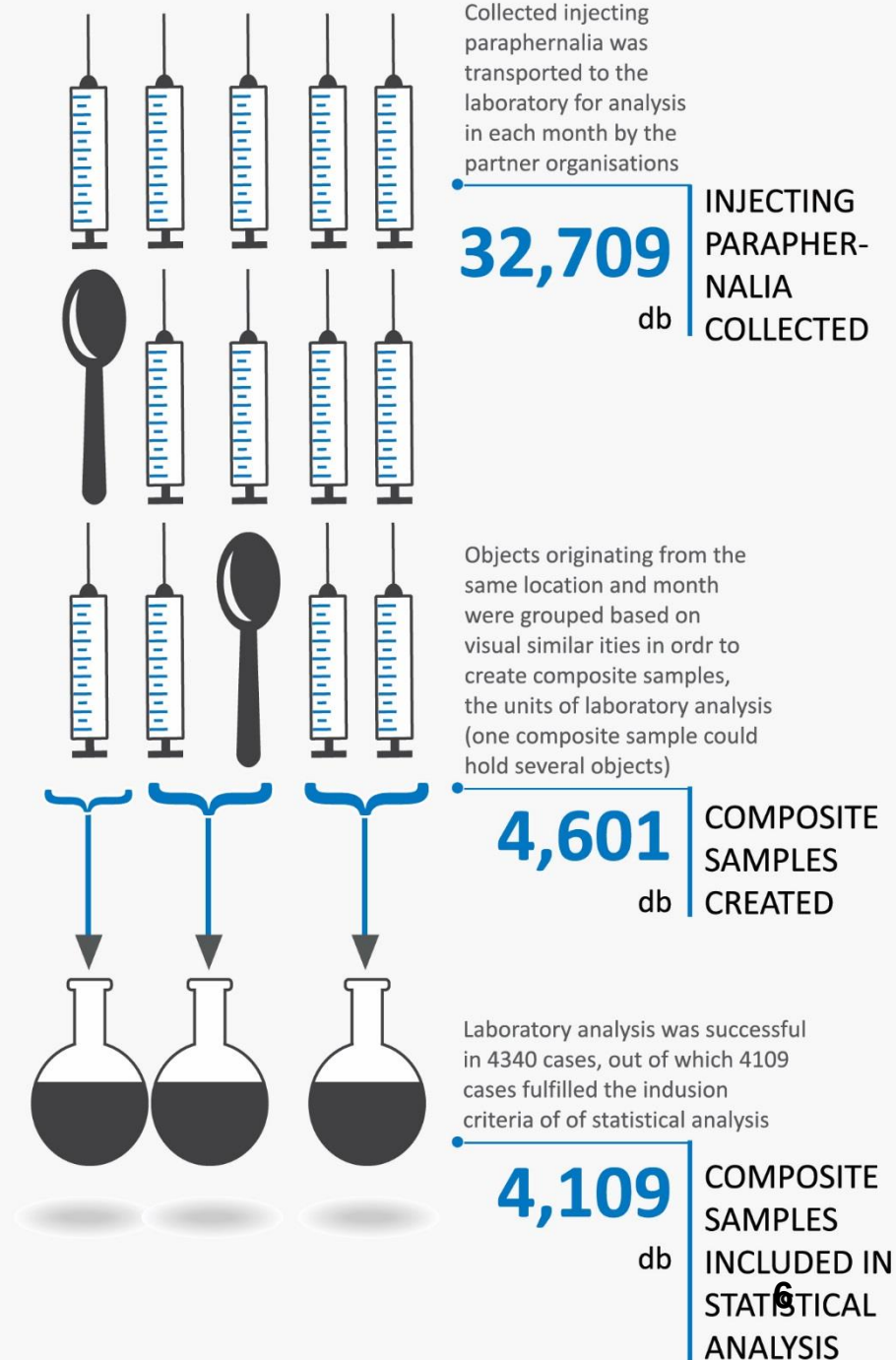
Method (1)

- Collection of used injecting paraphernalia (needles, syringes, filters, stericup, spoon)
- Between March 2015 and July 2016
- At 7 locations in 6 cities via low threshold programmes, syringe vending machine and collection from the streets



Method (2)

- Objects grouped into composite samples
- Analysis of substance residues by GC-MS
- Following a screening method: based on analytical standards and mass spectral libraries
- Focus on the main component of each analytical sample



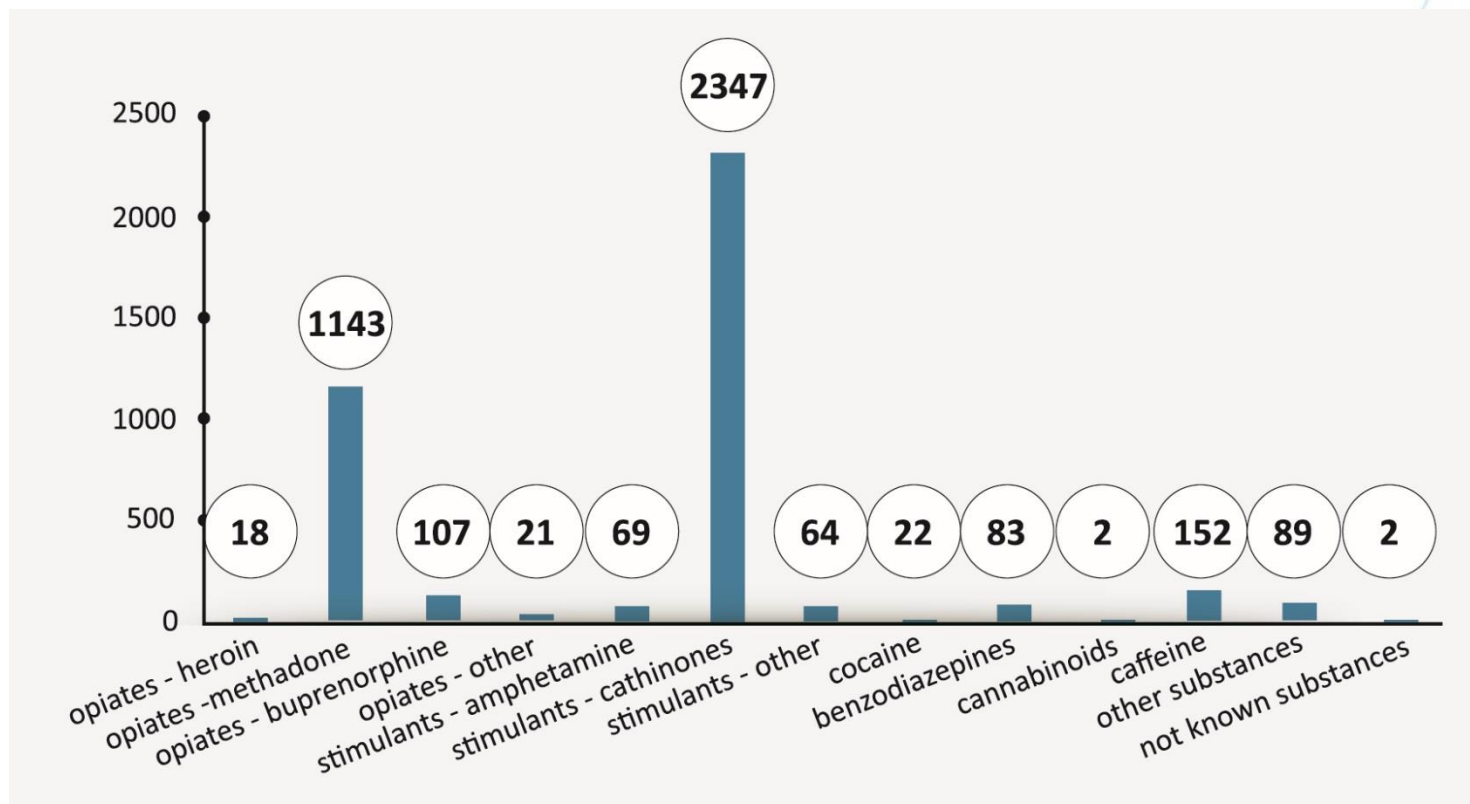
Method (3)

Challenges, limitations:

- Multiple objects in each analytical sample
- Multiple injection with the same object: between 2.15 and 2.44 (in HIV/HBV/HCV seroprevalence data)
- Content of blood in syringes (when registering)

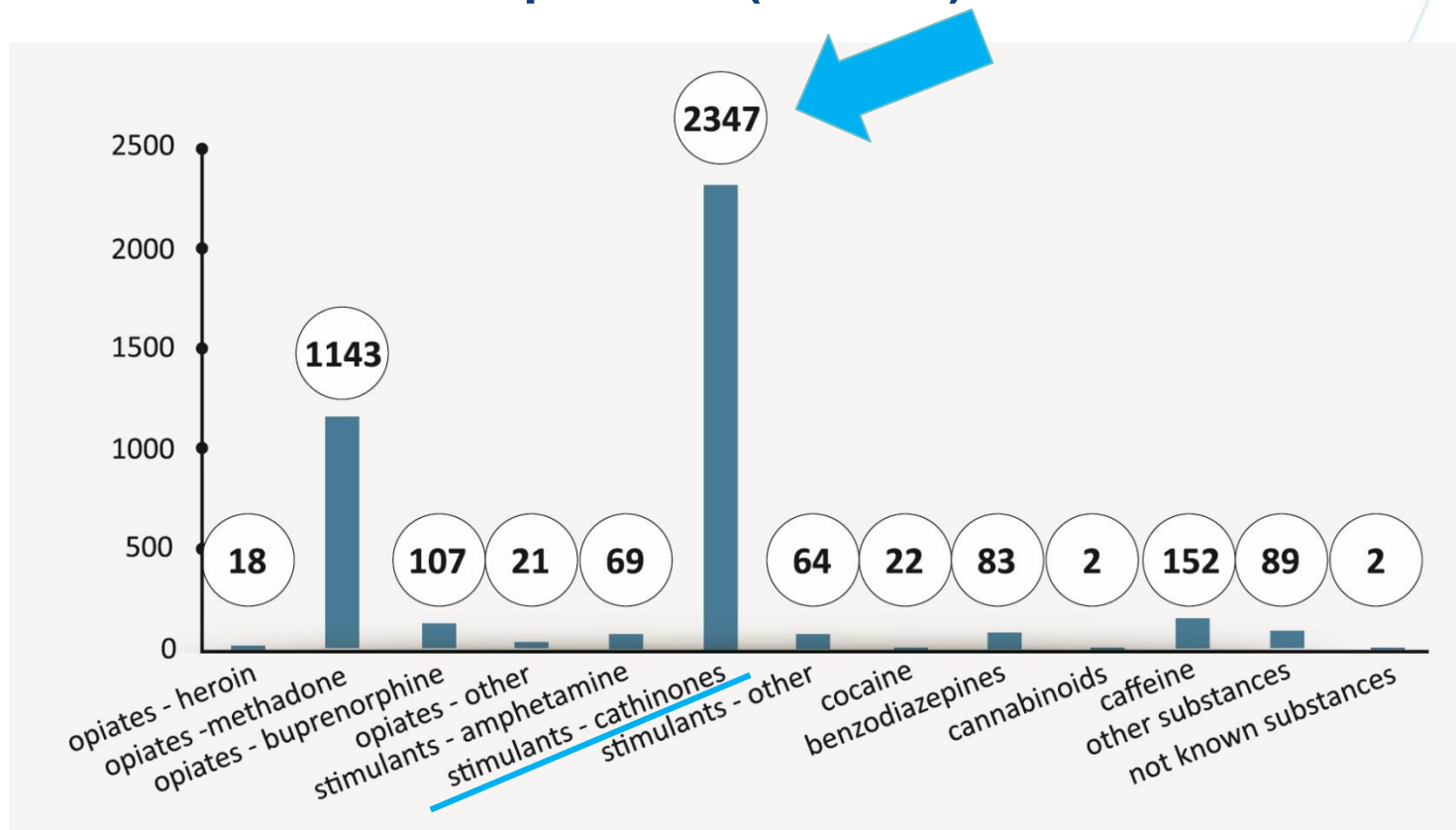
Results (1)

Identified main components (N=4109)

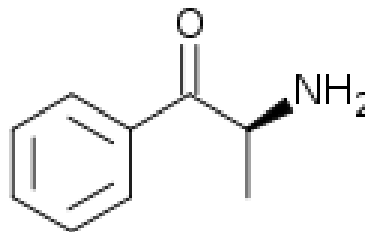


Results (1)

Identified main components (N=4109)



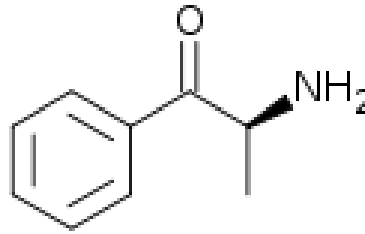
Results (2)



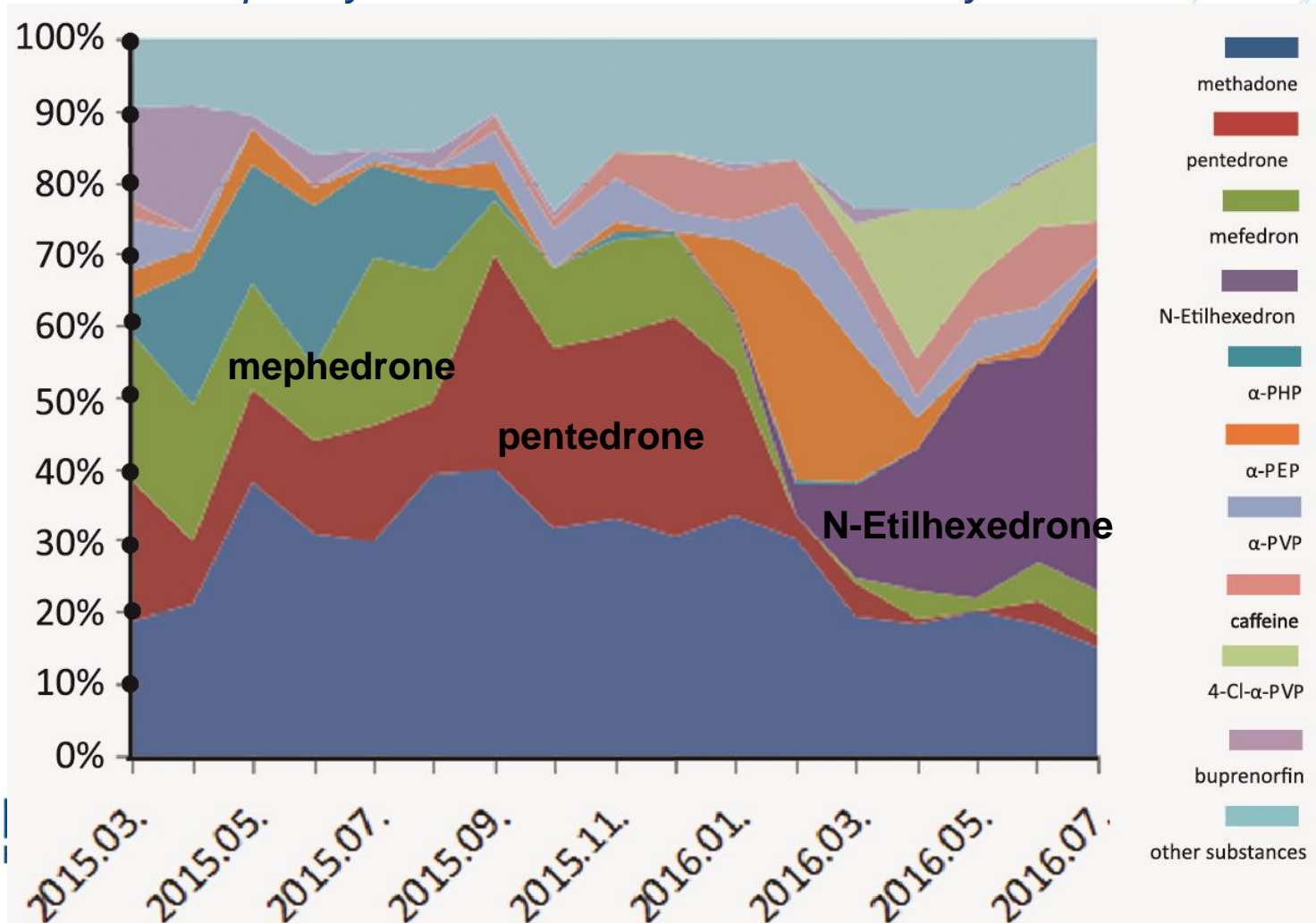
Synthetic cathinones in injecting paraphernalia

- 57% of samples held a synthetic cathinone as main component
- 40< different synthetic cathinones identified
- different life span at the market

Results (2)

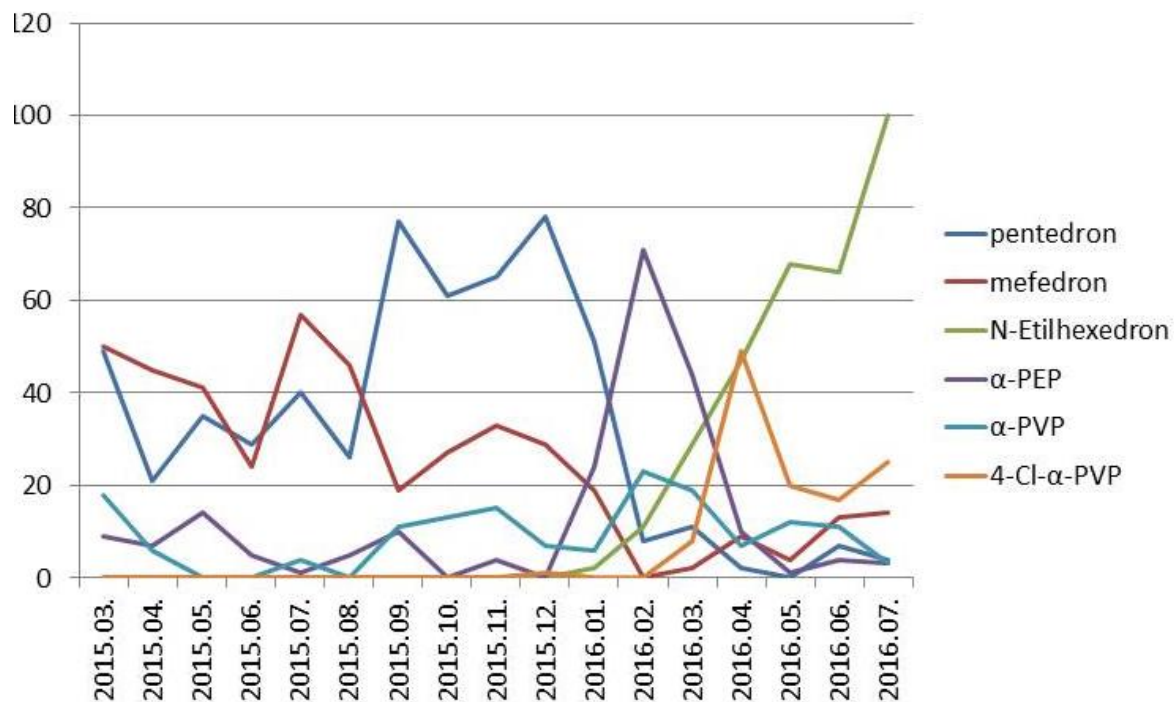


The 10 most frequently identified substances in monthly breakdown

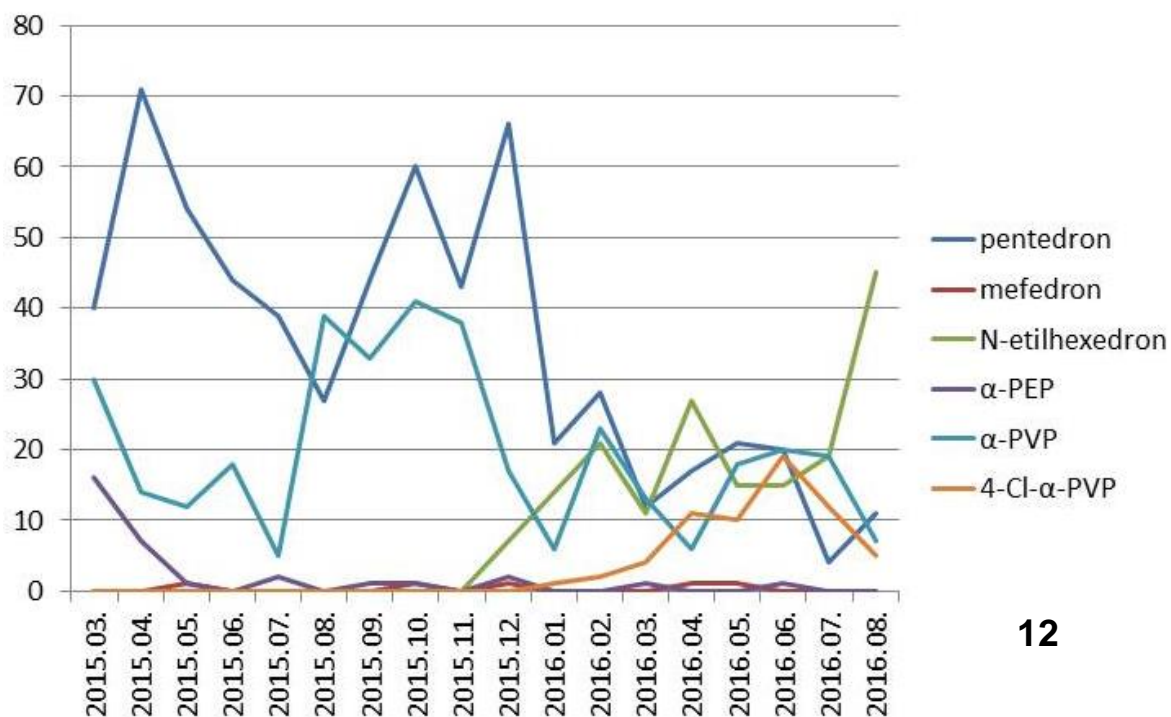


Results (3)

Synthetic cathinones in the study

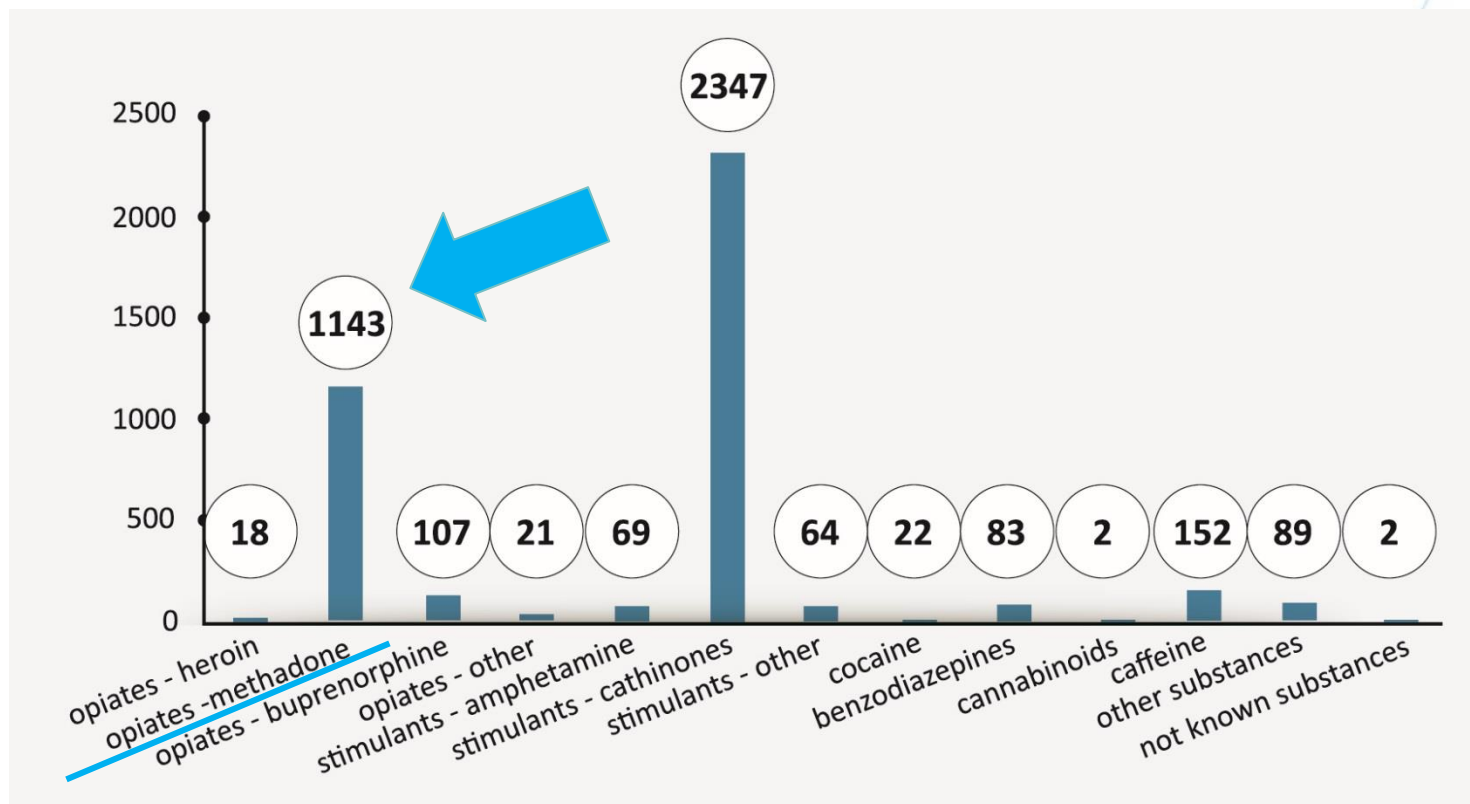


Synthetic cathinones in police seizures data (BSZKI)



Results (4)

Identified main components (N=4109)



Results (5)

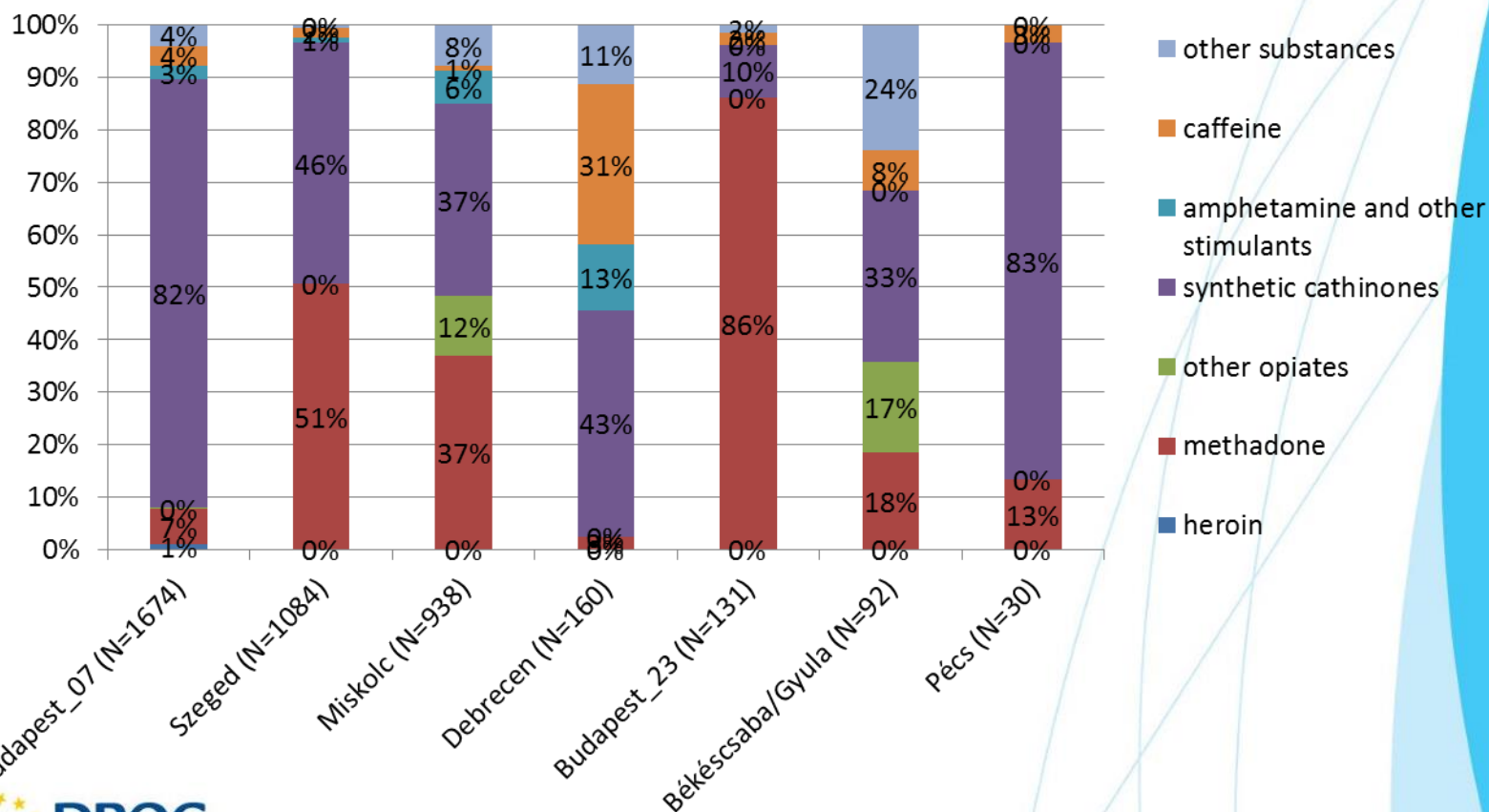


Methadone

- In 28% of the analytical samples methadone was the main component
- In 3 study locations it was identified in remarkably high proportion (37% \leq) – OST is available at these locations
- At other locations it was identified between 2-17%

Results (6)

Geographical differences



Conclusions

- Dominance of synthetic cathinones in injected substances – in line with self-reported data
- N-ethylhexedrone as the new pentedrone?
- Amphetamine and heroin identified sporadically
- Injecting misuse of methadone is remarkably high – secondary drug? former heroin users?
- Marked geographical differences

Thank you!

Anna Péterfi

anna.peterfi@emmi.gov.hu

Hungarian National Focal Point

www.drogfokuszpont.hu

The project's final report:

[http://www.segelyszervezet.hu/sites/default/files/
documents/tisztabb_kep_egyben.pdf](http://www.segelyszervezet.hu/sites/default/files/documents/tisztabb_kep_egyben.pdf)